

DC Power Supply

Programmable Switching DC Power Supply TP-P Series

Product description:

TP-P series programmable DC power supply is switch mode DC power supply with USB interface for communication. The maximum power is up to 6kW. Within this power, TP-P series is open to comprehensive customization of max voltage 1000V and max current 300A industrial applications.

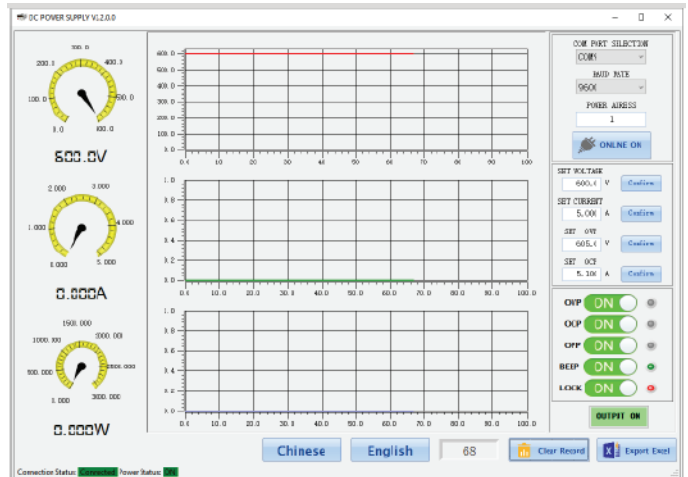


Features

- ◆ Max. output power ranging from 200W to 6kW
- ◆ Max. output voltage 1000V, Max. output current 300A
- ◆ MCU digital control and advanced PWM regulation
- ◆ Compact design and light weight
- ◆ Coarse and Fine control for voltage and current
- ◆ Over voltage, over current and over temperature protections
- ◆ Built-in beeper alarm
- ◆ Intelligent temperature control cooling fan
- ◆ Panel lock and output ON/OFF function
- ◆ USB interface can be changed to RS232 or RS485 interface at request
- ◆ USB interface, support MODBUS-RTU commands
- ◆ Constant voltage; CV/constant current;CC operations; Auto CV/CC switch
- ◆ Customized specifications and functions acceptable****

Operation software

- ◆ Free PC control software



Specifications

| Model | TP-P Seires |
|-------------------------|---|
| Output capacity | 200W~6kW |
| Working mode | PWM |
| Output | |
| Output voltage | DC 0~100% full range adjustable |
| Output current | DC 0~100% full range adjustable |
| O.V.P. range | DC 1~110% FS |
| O.C.P. range | DC 1~110% FS |
| O.P.P range | DC 1~100% FS |
| Line regulation | ≤0.5% FS |
| Load regulation | ≤0.5% FS |
| Ripple & Noise | ≤0.5% FS |
| Setting accuracy | 0.1%FS + 1 digit |
| Display | |
| Voltmeter | 4 digits LED display |
| Ammeter | 4 digits LED display |
| Voltage resolution | 0.000~9.999V; 00.00~99.99V; 000.0~999.9V |
| Current resolution | 0.000~9.999A; 00.00~99.99A; 000.0~999.9A |
| Readback accuracy | ±1% FS +1 digit |
| Communications | |
| Interface | USB device, can be change to RS-232 or RS-485 interface at request |
| Protocols | ModBus-RTU |
| General features | |
| Protection | Over voltage, over current, over temperature and over power protections |
| Operating environment | 0°C~40°C, <80%RH |
| Storage environment | -10°C ~70°C, <80%RH |
| Power source | AC 220V±10% or AC 110V±10%, 50/60Hz |
| Input module | Power socket or terminal block |
| Dimension (WxHxD) | 200x150x285mm (M chassis, 150W~1500W) 260x160x380mm (L chassis, 500W~3000W) 260x160x440mm (XL chassis, 1800W~6000W) |
| Weight | Approx. 4kg to 10kg. |



TP-P Series (M chassis)



TP-P Series (L & XL chassis)


Ordering Informations

| Model | Rate Output | | Power | Display Resolution | |
|---|-------------|-----------|--------|--------------------|-------|
| M chassis, 200Wx150Hx285D mm, 150W ~ 1500W | | | | | |
| TP5-120P | 0 ~ 5 V | 0 ~ 120 A | 600 W | 1mV | 100mA |
| TP15-30P | 0 ~ 15 V | 0 ~ 30 A | 450 W | 10mV | 10mA |
| TP15-50P | 0 ~ 15 V | 0 ~ 50 A | 750 W | 10mV | 10mA |
| TP15-60P | 0 ~ 15 V | 0 ~ 60 A | 900 W | 10mV | 10mA |
| TP15-80P | 0 ~ 15 V | 0 ~ 80 A | 1200 W | 10mV | 10mA |
| TP15-100P | 0 ~ 15 V | 0 ~ 100 A | 1500 W | 10mV | 100mA |
| TP30-20P | 0 ~ 30 V | 0 ~ 20 A | 600 W | 10mV | 10mA |
| TP30-30P | 0 ~ 30 V | 0 ~ 30 A | 900 W | 10mV | 10mA |
| TP30-40P | 0 ~ 30 V | 0 ~ 40 A | 1200 W | 10mV | 10mA |
| TP30-50P | 0 ~ 30 V | 0 ~ 50 A | 1500 W | 10mV | 10mA |
| TP30-60P | 0 ~ 30 V | 0 ~ 60A | 1800 W | 10mV | 10mA |
| TP50-20P | 0 ~ 50 V | 0 ~ 20 A | 1000 W | 10mV | 10mA |
| TP50-30P | 0 ~ 50 V | 0 ~ 30 A | 1500 W | 10mV | 10mA |
| TP60-10P | 0 ~ 60V | 0 ~ 10 A | 600 W | 10mV | 10mA |
| TP60-20P | 0 ~ 60 V | 0 ~ 20 A | 1200 W | 10mV | 10mA |
| TP60-30P | 0 ~ 60 V | 0 ~ 30 A | 1800 W | 10mV | 10mA |
| TP100-5P | 0 ~ 100 V | 0 ~ 5 A | 500 W | 100mV | 1mA |
| TP100-6P | 0 ~ 100 V | 0 ~ 6 A | 600 W | 100mV | 1mA |
| TP100-10P | 0 ~ 100 V | 0 ~ 10 A | 1000 W | 100mV | 10mA |
| TP100-15P | 0 ~ 100 V | 0 ~ 15 A | 1500 W | 100mV | 10mA |
| TP120-5P | 0 ~ 120 V | 0 ~ 5 A | 600 W | 100mV | 1mA |
| TP120-10P | 0 ~ 120 V | 0 ~ 10 A | 1200 W | 100mV | 10mA |
| TP150-3P | 0 ~ 150 V | 0 ~ 3 A | 450 W | 100mV | 1mA |
| TP150-5P | 0 ~ 150 V | 0 ~ 5 A | 750 W | 100mV | 1mA |
| TP150-10P | 0 ~ 150 V | 0 ~ 10 A | 1500 W | 100mV | 10mA |
| TP200-1P | 0 ~ 200 V | 0 ~ 1 A | 200 W | 100mV | 1mA |
| TP200-2P | 0 ~ 200 V | 0 ~ 2 A | 400 W | 100mV | 1mA |
| TP200-3P | 0 ~ 200 V | 0 ~ 3 A | 600 W | 100mV | 1mA |
| TP200-5P | 0 ~ 200 V | 0 ~ 5 A | 1000 W | 100mV | 1mA |
| TP220-1P | 0 ~ 220 V | 0 ~ 1 A | 220 W | 100mV | 1mA |
| TP220-2P | 0 ~ 220 V | 0 ~ 2 A | 440 W | 100mV | 1mA |
| TP220-3P | 0 ~ 220 V | 0 ~ 3 A | 660 W | 100mV | 1mA |
| TP220-5P | 0 ~ 220 V | 0 ~ 5 A | 1100 W | 100mV | 1mA |
| TP250-1P | 0 ~ 250 V | 0 ~ 1 A | 250 W | 100mV | 1mA |
| TP250-2P | 0 ~ 250 V | 0 ~ 2 A | 500 W | 100mV | 1mA |
| TP250-3P | 0 ~ 250 V | 0 ~ 3 A | 750 W | 100mV | 1mA |
| TP250-4P | 0 ~ 250 V | 0 ~ 4 A | 1000 W | 100mV | 1mA |
| TP250-5P | 0 ~ 250 V | 0 ~ 5 A | 1250 W | 100mV | 1mA |
| TP300-1P | 0 ~ 300 V | 0 ~ 1 A | 300 W | 100mV | 1mA |
| TP300-2P | 0 ~ 300 V | 0 ~ 2 A | 600 W | 100mV | 1mA |
| TP300-3P | 0 ~ 300 V | 0 ~ 3 A | 900 W | 100mV | 1mA |
| TP300-5P | 0 ~ 300 V | 0 ~ 5 A | 1500 W | 100mV | 1mA |
| TP400-1P | 0 ~ 400 V | 0 ~ 1 A | 400 W | 100mV | 1mA |
| TP400-2P | 0 ~ 400 V | 0 ~ 2 A | 800 W | 100mV | 1mA |
| TP400-3P | 0 ~ 400 V | 0 ~ 3 A | 1200 W | 100mV | 1mA |
| L chassis, 260W*x60Hx380D mm, 500W ~ 3000W | | | | | |
| TP5-200P | 0 ~ 50 V | 0 ~ 200 A | 1000 W | 1mV | 100mA |
| TP15-120P | 0 ~ 15 V | 0 ~ 120 A | 1800 W | 10mV | 100mA |
| TP25-100P | 0 ~ 25 V | 0 ~ 100 A | 2500 W | 10mV | 100mA |
| TP30-60P | 0 ~ 30 V | 0 ~ 60 A | 1800 W | 10mV | 10mA |
| TP30-80P | 0 ~ 30 V | 0 ~ 80 A | 2400 W | 10mV | 10mA |
| TP30-100P | 0 ~ 30 V | 0 ~ 100 A | 3000 W | 10mV | 100mA |
| TP50-40P | 0 ~ 50 V | 0 ~ 40 A | 2000 W | 10mV | 10mA |
| TP50-50P | 0 ~ 50 V | 0 ~ 50 A | 2500 W | 10mV | 10mA |
| TP50-60P | 0 ~ 50 V | 0 ~ 60 A | 3000 W | 10mV | 10mA |
| TP60-30P | 0 ~ 60 V | 0 ~ 30 A | 1800 W | 10mV | 10mA |
| TP60-40P | 0 ~ 60 V | 0 ~ 40 A | 2400 W | 10mV | 10mA |
| TP60-50P | 0 ~ 60 V | 0 ~ 50 A | 3000 W | 10mV | 10mA |
| TP80-20P | 0 ~ 80 V | 0 ~ 20 A | 1600 W | 10mV | 10mA |
| TP80-30P | 0 ~ 80V | 0 ~ 30 A | 2400 W | 10mV | 10mA |
| TP100-10P | 0 ~ 100 V | 0 ~ 10 A | 1000 W | 100mV | 10mA |

| Model | Rate Output | | Power | Display Resolution | |
|---|-------------|-----------|--------|--------------------|-------|
| L chassis, 260W*x60Hx380D mm, 500W ~ 3000W | | | | | |
| TP100-20P | 0 ~ 100 V | 0 ~ 20 A | 2000 W | 100mV | 10mA |
| TP100-25P | 0 ~ 100 V | 0 ~ 25 A | 2500 W | 100mV | 10mA |
| TP100-30P | 0 ~ 100 V | 0 ~ 30 A | 3000 W | 100mV | 10mA |
| TP120-20P | 0 ~ 120 V | 0 ~ 20 A | 2400 W | 100mV | 10mA |
| TP150-20P | 0 ~ 150 V | 0 ~ 20 A | 3000 W | 100mV | 10mA |
| TP200-10P | 0 ~ 200 V | 0 ~ 10 A | 2000 W | 100mV | 10mA |
| TP220-10P | 0 ~ 220 V | 0 ~ 10 A | 2200 W | 100mV | 10mA |
| TP250-10P | 0 ~ 250 V | 0 ~ 10 A | 2500 W | 100mV | 10mA |
| TP400-5P | 0 ~ 400 V | 0 ~ 5 A | 2000 W | 100mV | 1mA |
| TP500-1P | 0 ~ 500 V | 0 ~ 1 A | 500 W | 100mV | 1mA |
| TP500-2P | 0 ~ 500 V | 0 ~ 2 A | 1000 W | 100mV | 1mA |
| TP500-3P | 0 ~ 500 V | 0 ~ 3 A | 1500 W | 100mV | 1mA |
| TP500-5P | 0 ~ 500 V | 0 ~ 5 A | 2500 W | 100mV | 1mA |
| TP600-1P | 0 ~ 600 V | 0 ~ 1 A | 600 W | 100mV | 1mA |
| TP600-2P | 0 ~ 600 V | 0 ~ 2A | 1200 W | 100mV | 1mA |
| TP600-3P | 0 ~ 600 V | 0 ~ 3 A | 1800 W | 100mV | 1mA |
| TP800-1P | 0 ~ 800 V | 0 ~ 1 A | 800 W | 100mV | 1mA |
| TP800-2P | 0 ~ 800 V | 0 ~ 2 A | 1600 W | 100mV | 1mA |
| TP800-3P | 0 ~ 800 V | 0 ~ 3 A | 2400 W | 100mV | 1mA |
| TP1000-1P | 0 ~ 1000 V | 0 ~ 1 A | 1000 W | 1V | 1mA |
| TP1000-2P | 0 ~ 1000 V | 0 ~ 2 A | 2000 W | 1V | 1mA |
| TP1000-3P | 0 ~ 1000 V | 0 ~ 3 A | 3000 W | 1V | 1mA |
| XL chassis, 260Wx160Hx440D mm, 1800W ~ 6000W | | | | | |
| TP10-250P | 0 ~ 10 V | 0 ~ 250 A | 2500 W | 10mV | 100mA |
| TP15-150P | 0 ~ 15 V | 0 ~ 150 A | 2250 W | 10mV | 100mA |
| TP15-200P | 0 ~ 15 V | 0 ~ 200 A | 3000 W | 10mV | 100mA |
| TP30-120P | 0 ~ 30 V | 0 ~ 120 A | 3600 W | 10mV | 100mA |
| TP30-150P | 0 ~ 30 V | 0 ~ 150 A | 4500 W | 10mV | 100mA |
| TP30-200P | 0 ~ 30 V | 0 ~ 200 A | 6000 W | 10mV | 100mA |
| TP50-80P | 0 ~ 50 V | 0 ~ 80 A | 4000 W | 10mV | 10mA |
| TP50-100P | 0 ~ 50 V | 0 ~ 100 A | 5000 W | 10mV | 100mA |
| TP50-120P | 0 ~ 50 V | 0 ~ 120 A | 6000 W | 10mV | 100mA |
| TP60-60P | 0 ~ 60 V | 0 ~ 60 A | 3600 W | 10mV | 10mA |
| TP60-80P | 0 ~ 60 V | 0 ~ 80 A | 4800 W | 10mV | 10mA |
| TP60-100P | 0 ~ 60 V | 0 ~ 100 A | 6000 W | 10mV | 100mA |
| TP80-40P | 0 ~ 80 V | 0 ~ 40 A | 3200 W | 10mV | 10mA |
| TP80-50P | 0 ~ 80 V | 0 ~ 50 A | 4000 W | 10mV | 10mA |
| TP80-60P | 0 ~ 80 V | 0 ~ 60 A | 4800 W | 10mV | 10mA |
| TP100-40P | 0 ~ 100 V | 0 ~ 40 A | 4000 W | 100mV | 10mA |
| TP100-50P | 0 ~ 100 V | 0 ~ 50 A | 5000 W | 100mV | 10mA |
| TP100-60P | 0 ~ 100 V | 0 ~ 60 A | 6000 W | 100mV | 10mA |
| TP120-30P | 0 ~ 120 V | 0 ~ 30 A | 3600 W | 100mV | 10mA |
| TP120-40P | 0 ~ 120 V | 0 ~ 40 A | 4800W | 100mV | 10mA |
| TP120-50P | 0 ~ 120 V | 0 ~ 50 A | 6000 W | 100mV | 10mA |
| TP150-30P | 0 ~ 150 V | 0 ~ 30 A | 4500 W | 100mV | 10mA |
| TP150-40P | 0 ~ 150 V | 0 ~ 40 A | 6000 W | 100mV | 10mA |
| TP200-20P | 0 ~ 200 V | 0 ~ 20 A | 4000 W | 100mV | 10mA |
| TP200-25P | 0 ~ 200 V | 0 ~ 25 A | 5000 W | 100mV | 10mA |
| TP200-30P | 0 ~ 200 V | 0 ~ 30 A | 6000 W | 100mV | 10mA |
| TP220-20P | 0 ~ 220 V | 0 ~ 20 A | 4400 W | 100mV | 10mA |
| TP250-20P | 0 ~ 250 V | 0 ~ 20 A | 5000 W | 100mV | 10mA |
| TP300-10P | 0 ~ 300 V | 0 ~ 10 A | 3000 W | 100mV | 10mA |
| TP300-15P | 0 ~ 300 V | 0 ~ 15 A | 4500 W | 100mV | 10mA |
| TP300-20P | 0 ~ 300 V | 0 ~ 20 A | 6000 W | 100mV | 10mA |
| TP400-10P | 0 ~ 400 V | 0 ~ 10 A | 4000 W | 100mV | 10mA |
| TP400-15P | 0 ~ 400 V | 0 ~ 15 A | 6000W | 100mV | 10mA |
| TP500-10P | 0 ~ 500 V | 0 ~ 10 A | 5000 W | 100mV | 10mA |
| TP600-5P | 0 ~ 600 V | 0 ~ 5 A | 3000 W | 100mV | 1mA |
| TP600-8P | 0 ~ 600 V | 0 ~ 8 A | 4800 W | 100mV | 1mA |
| TP800-5P | 0 ~ 800 V | 0 ~ 5 A | 4000 W | 100mV | 1mA |
| TP800-6P | 0 ~ 800 V | 0 ~ 6 A | 4800 W | 100mV | 1mA |

Standard Accessories :

- User Manual
- Power cord
- USB cable
- Fuse

Safety Tester
 AC Power Supply
 DC Power Supply
 Power Analyzer
 Electronic Load
 Resistance Tester
 LCR Meter
 Temperature Tester
 Environmental Tester
 General Tester