

TORQUE WENRCH TESTER

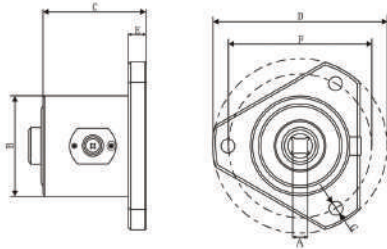
MECHANICAL TOOLS & EQUIPMENTS



ETP-Series

Features

- Accuracy: $\pm 1\%$
- Clockwise and counterclockwise both can operate.
- Three Mode :Peak Hold,MAX and Track Mode.
- The sleep time can be preset and automatic shut down.
- Three unit can be selection : N.m, Kgf.cm, lbf.in
- Buzzer and LED light warning.
- 2000 groups store values.
- Communication output function.



Dimension of load cell

Part	Model	ETP-5	ETP-50	ETP-220	ETP-550	ETP-2200
A		6.35sp (1/4)	9.5sp (3/8)	12.7sp (1/2)	19sp (3/4)	25.4sp (1)
B		Φ38	Φ62	Φ62	Φ94	Φ94
C		46	73	73	116	116
D		Φ60	Φ109	Φ109	Φ160	Φ160
E		6	11	11	26	26
F		Φ50	Φ90	Φ90	Φ132	Φ132
G		Φ4.5	Φ8.5	Φ8.5	Φ12.5	Φ12.5

ETP-Series Digital Portable Torque Wrench Tester

Digital Portable Torque Wrench Tester is a quality control equipment, it can used for calibrating the torque load cell and testing the tighten force of nut and other fasteners. It is easy operation, high accuracy and easy to carry. It is widely used for various electrical, light industry, machinery manufacturing, scientific research and other industries.



Usages of ETP-series

ETP-series with package set



Ordering Information

Standard Accessories:

- User Manual
- Inspection certificate
- Hard carry case

MODEL		ETP-5	ETP-50	ETP-220	ETP-550	ETP-2200
Measuring range and division value	N.m	0.500 ~ 5.00	5.00 ~ 50.00	22.0 ~ 220.0	55.0 ~ 550.0	220 ~ 2200
	kgf.cm	5.10 ~ 50.98	50.98 ~ 509.85	224.3 ~ 2243.3	560.8 ~ 5608	2243.3 ~ 22433
	lbf.in	4.43 ~ 44.25	44.25 ~ 442.53	194.7 ~ 1947.15	486.7 ~ 4867	1947.1 ~ 19471
Accuracy		$\pm 1\%$				
Data Storage		2000 groups				
Connect Size		1/4	3/8	1/2	3/4	1
Output Function		USB Line				
Operation Mode		Peak mode/ Track mode/ Max Peak mode				
Unit Selection		N.m, kgf.cm, lbf.in				
Operation Temperature		5°C ~ 40°C				
Storage Temperature		-20°C ~ 70°C				
Relative Humidity		No condensation can reach 90%				
Power Supply		7.2V Ni-He Battery				
Weight		0.7kg	1.40kg	1.48kg	4.70kg	5.0kg