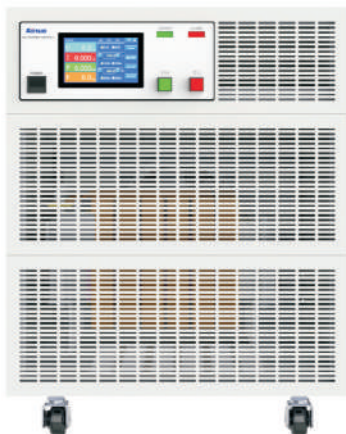


## AC Power Supply ANFH(F) Series



### Features

- 19" standard chassis, compact, can be installed in standard cabinet
- Withstand 3 times the rated current lasting for 2S, directly start impact load equivalent to 1/3 of the power
- Adjustment of voltage/frequency in output state
- Startup ramp-up and online ramp-up, and the ramp-up time can be set
- Measurements: voltage, current, frequency, active power
- Voltage level: 1.0~150.0V, 150.1~300.0V automatically adjustable or locked within 1.0~300.0V
- Line voltage drop compensation
- Multi shortcut groups, power-down memory and shortcut keys
- 4.3" color touch screen, convenient and intuitive
- Key lock and humanized design to avoid misoperation
- Operating data recorders: automatically record the power state when alarming and alarm code etc
- Standard RS232 port, optional RS485/GPIB/Ethernet port or analog control

### Applications

- Over shock capacity: impact loads with 1/3 power can be directly started without soft start

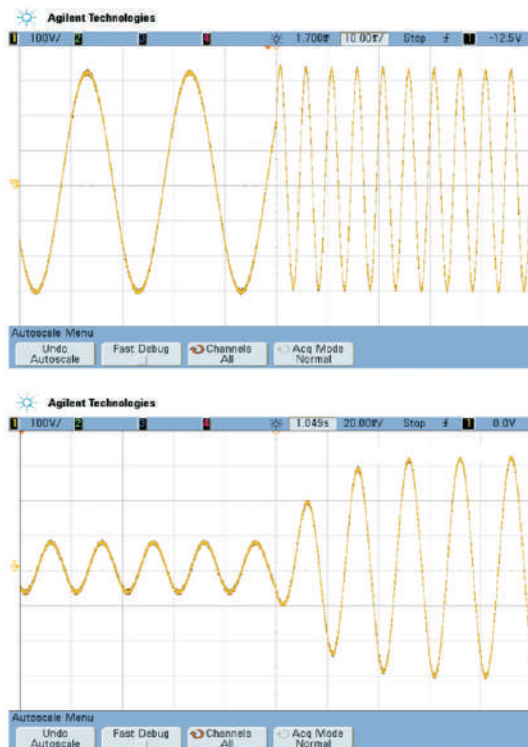
### Product Introduction

ANFH(F) series AC power supply adopts digital technology and IGBT intelligent output with pure output waveform. The power supply has the ability to withstand impact of 3 times the rated current, featuring strong load adaptability, suitable for various impact loads such as motors and air conditioners, with good dynamic characteristics.

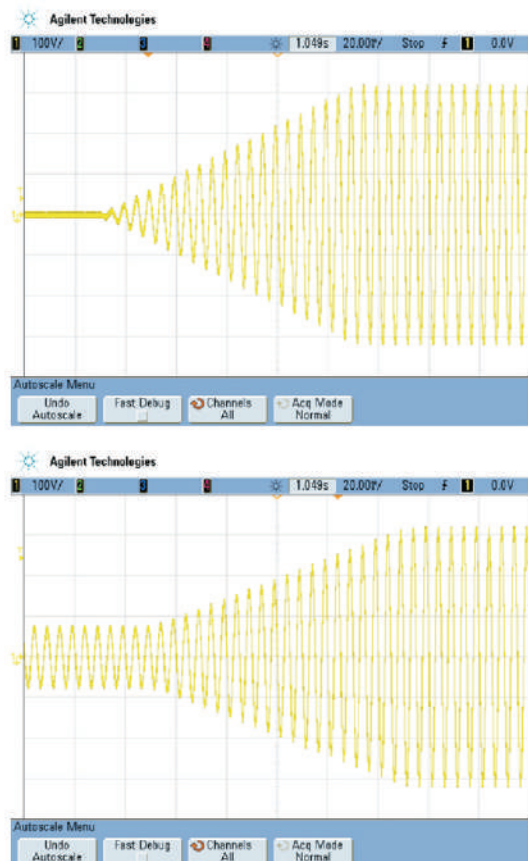
The power supply is designed suitable for 19" standard chassis, compact, and can be directly installed in a standard cabinet for various applications such as testing, system integration, production line, etc.; as well as 4.3" color LCD touch screen, convenient and intuitive, widely used in home appliance lines, labs, quality inspection institutes, certification centers etc.



## Adjustment of voltage/frequency in output state



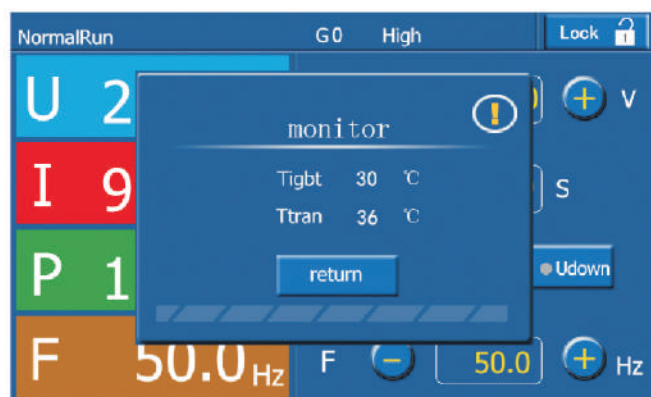
## Start ramp up and online ramp up



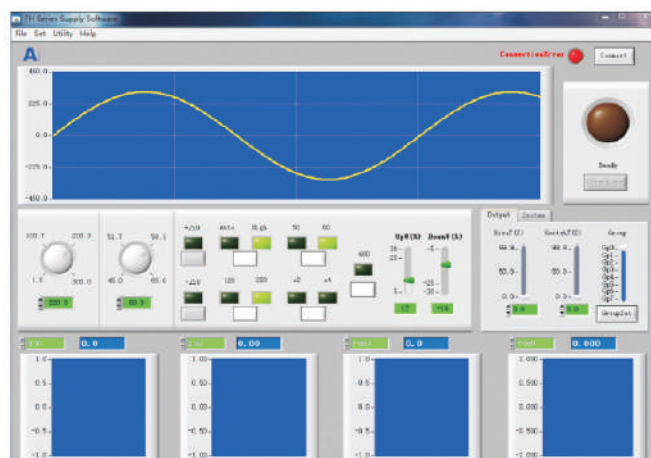
## 4.3" color touch screen, convenient and intuitive



## Online monitoring function



## PC control software





### Specifications

Model		ANFH000S(F)	ANFH001S(F)	ANFH002S(F)	ANFH003S(F)	ANFH005S(F)	ANFH010S(F)	ANFH010TS(F)	
Capacity		500 VA	1 KVA	2 KVA	3 KVA	5KVA	10KVA	10KVA	
Input	Number of phases	Single-phase two-wire+PE						3-phase 4-wire+PE	
	Voltage	Phase voltage: 220V±10%						Line Voltage:380V±10%	
	Frequency	50/60Hz±3 Hz							
Output	Number of phases	Single-phase two-wire							
	Voltage	Phase voltage: 1.0~300.0V; Automatic state: (Low voltage) 1.0 ~ 150.0V, (High voltage) 150.1 ~ 300.0V; High voltage locked state: (High voltage) 1.0 ~ 300.0V							
	Frequency	45.0Hz ~ 65.0Hz, 100Hz, 120Hz, 200Hz, 240Hz, 400Hz							
	Rated current	110 V	4.6A	9.2A	18.2A	27.4A	45.6A	91.0A	91.0A
		220 V	2.3A	4.6A	9.1A	13.7A	22.8A	45.5A	45.5A
	Setting accuracy	Voltage	Resolution: 0.1 V Precision: 0.2% × reading value+0.2% × full scale value						
		Frequency	Resolution: 0.1 Hz Precision: 0.05%						
	Testing accuracy	Voltage	Resolution: 0.1 V Precision: 0.2% × reading value+0.2% × full scale value						
		Frequency	Resolution: 0.1 Hz Precision: 0.05%						
		Current	Resolution: 0.001A/0.01A/0.1A Precision: 0.3% × reading value+0.3% ×full scale value						
		Power	Resolution: 0.001 kW /0.01kW Precision: 0.45% × reading value+0.45% × full scale value						
	Frequency stability	≤0.02%							
	Voltage distortion	Linear load: THD<1%							
	Transient recovery time	20 ms							
	Voltage crest factor	1.41±0.1							
	Source voltage effect	≤1%							
	Load effect	≤1%							
	Overload capacity	105% < output ≤ 110% , turn off the output within 15 seconds; 110%< output ≤ 200%, turn off the output within 5 seconds; 200% < output ≤ 300%, turn off the output within 2 seconds; 300% < output, turn off the output immediately.							
	Shock resistance	Withstand 3 times rated current for 2S							
	Protection mode	Overheat protection, over-current protection, output overload protection, output short-circuit protection							
	Efficiency	>70%				>80%			
Function	Display mode	4.3" color LCD touch screen							
	Soft-start time	0.0~99.9Sec.							
	Online adjustment function	The output voltage and output frequency can be adjusted online (45.0~65.0Hz); Online switching ramp-up time can be set: 0.0~99.9s							
	Memory function	Power down memory function, memorizing last output mode and parameters							
	Shortcut group	8 groups							
	Line voltage crop compensation	0.000 ~ 0.0500 Ω							
	Communication	Standard RS232, optional RS485/GPIB/Ethernet							
	Remote control	Optional analog control port							
Working Environment	Temperature	0 ~ 40 ℃							
	Humidity	20% ~ 90%RH							
Dimensions W×H×D (mm)		3U		3U	4U	11U	13U		
		432×133(148)×400		432×133(148)×550	432×177(192)×550	432×488(563)×400	432×577(652)×400		
		The (*) means the height including machine foot, the feet can be removed				The (*) means the height including machine caster, the casters can be removed			
		Width is 432mm (handle excluded), 483mm (handle included), handle is optional							
Weight (kg)		17	20	26	35	59	82	82	