

### Comprehensive High-power Motor Test Scheme AN8353(F)



#### Product Introduction

This product is suitable for the performance test of 3-phase stator/complete machine with power below 500KW, and widely used in industries such as elevator motor, reducer, industrial fan, water pump motor, crane, generator and so on.

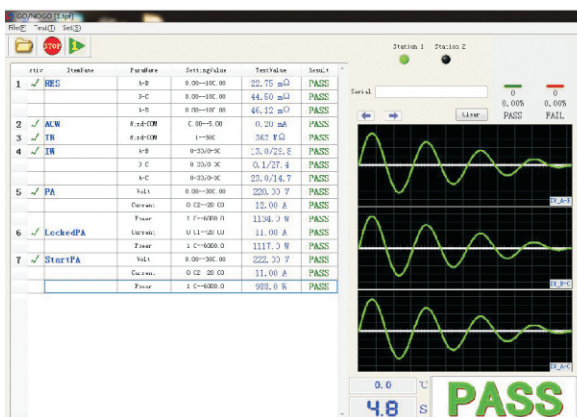
#### Features

- Wide range: test of ultra wide resistance range (1mΩ~400KΩ).
- High level: 500KW motor turn-to-turn vibration, improving the detection rate of winding damage.
- Efficient: complete testing after connection at one time, high efficiency of large motor test.
- One-stop: self-developed AC/DC power supply, convenient and unified before/after sale.
- Module: Module test unit to avoid interference, and customize single/multi-station, serial/parallel test system as required.
- Multi ports: USB, RS232, LAN and other ports, PLC simulation, TCP/IP network protocol, etc., to facilitate data interaction and instrument control.

#### Test items

- Stator: withstand voltage, insulation, resistance, resistance balance, interturn.
- Motor: withstand voltage, insulation, resistance, interturn, no-load, locked-rotor.

#### Test cases



## Specifications

General parameters of AN8353S(F)/AN8353M(F) series

Application industries		Elevator motor, industrial reducer, high power fan, water pump motor, etc.		
Model of product		AN8353S(F)	AN8353M(F)	Custom parameters
Withstand voltage test	Output voltage	Range: 300 ~ 3000 VAC, step: 10V		5000 VAC
		Allowable error: $\pm (2.5\% \times \text{setting} + 10V)$		
	Break down current	Range: 0.10~20.00 mA		100 mA
		Allowable error: $\pm (2.5\% \times \text{reading} + 5 \text{ words})$		
Insulation test	Duration		Range: 1.0~99.9s, allowable error: $\pm (1\% \times \text{setting} + 0.1s)$	
	Output voltage	Range: 200 ~ 1000 VDC, step: 5V		
		Allowable error: $\pm (3\% \times \text{setting} + 5V)$		
	Ripple coefficient	< 5%		
	Resistance measurement	Range: 1.0~500MΩ		
		Allowable error: $\leq 200M\Omega$ , $\pm (3\% \times \text{reading} + 5 \text{ words})$		
Resistance test	Test and measurement	Range: 0.1~20k Ω, unit: Ω		1mΩ ~ 400KΩ 1m~400KΩ
		Allowable error: $\pm (0.3\% \times \text{reading} + 3 \text{ words})$		
	Temperature measurement	(0.0~60.0) °C, allowable error: $\pm 0.5$ °C		
Resistance balance	Calculation formula	Resistance -Resistance average /Resistance average*100%		
	Display range	0.0%~99.9%		
Interturn test	Pulse voltage	Range: 300~3000 V, step: 100V		5000 V
		Allowable error: $\pm (3\% \times \text{setting} + 10V)$		
	Wavefront time	$\leq 0.5\mu s$		
	Acquisition frequency	5kHz~40MHz 5kHz~40MHz		
No-load / Locked-rotor	Wave parameters	Area, difference area, (1~10) consecutive impacts; range: 0~99%		
	Voltage range		1.0~1000.0V;	Level-0.02
	Allowable error		$\pm (0.3\% \times \text{reading} + 0.2\% \times \text{range})$	
	Current		1.0~1000.00A;	
	Allowable error		$\pm (0.3\% \times \text{reading} + 0.2\% \times \text{range})$	
	Range of power		1.0~500KW;	
	Allowable error		$\pm (0.8\% \times \text{reading} + 0.2\% \times \text{range})$	
	Frequency range		0.5~100KHz;	
	Allowable error		$\pm (0.1\% \times \text{reading})$	

Optional information

Optional function	Interphase voltage	Interphase insulation	Inductance	Current balance	Rotation direction	Airtight	Fill oil	Vibration
AN8326S	√	√	√	√	√	----	----	----
AN8326M	√	√	√	√	----	√	√	√